

Kidde Fire Systems

Natura™ Inert Gas System

Component Description

Manifold Accessories



Effective: April 2022
K-38-3005 Rev AD

FEATURES

- For Approvals, see the “COMPATIBILITY” table.
- REACH and RoHS compliant

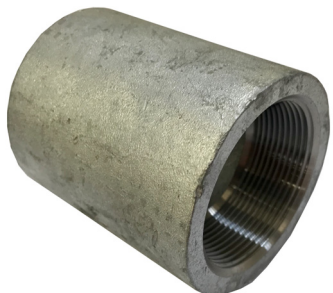


Figure 1. 2 in. BSPT Manifold Coupling



Figure 2. 2 in. BSPT Manifold End Cap

DESCRIPTION

Coupled manifolds together using the 2 in. BSPT Manifold Coupling (P/N: 38-400020-100). Use the manifold end cap (P/N 38-400020-101) to close of the end of the manifold that does not connect to the system piping. Use the 3/4 in. end cap (38-400020-102) to cap off any unused stubs or check vaves in a manifold. For example, if using an 8 stub, 2 row manifold and only needing to connect 7 cylinders, one stub would be capped off.



Figure 3. 3/4 in. BSP End Cap for 3/4 in. Check Valve in Manifold

COMPATIBILITY

Series	DIOM P/N	Approvals*
Natura™ Inert Gas System	06-237619-001	FM, UL
Natura™ Inert Gas System	06-237598-001	LPCB

* For additional listings, contact Kidde Fire Systems

ORDERING INFORMATION

Part Number	Description	Rating	Material	Approx. Weight
38-400020-100	2" BSPT Manifold Coupling	3000 lb	Plated Mild Steel	1.4 kg (3.1 lbs)
38-400020-101	2" BSPT Manifold End Cap	3000 lb		1.0 kg (2.2 lbs)
38-400020-102	3/4" BSP End Cap For 14mm Check Valve	300 bar		0.5 kg (1.1 lbs)

EXPORT INFORMATION (USA)

Jurisdiction: EAR
Classification: EAR99
This document contains technical data subject to the EAR.

All trademarks are property of their respective owners.
©2022 Carrier

This literature is provided for informational purposes only. KIDDE-FENWAL, INC. believes this data to be accurate, but it is published and presented without any guarantee or warranty whatsoever. KIDDE-FENWAL, INC. assumes no responsibility for the product's suitability for a particular application. Product features specified are only applicable when the fire suppression system is correctly designed, installed, maintained and serviced by trained, authorized Kidde Fire Systems distributors as per the applicable design, installation, operation, and maintenance manuals. If you need more information on this product, or if you have a particular problem or question, contact: KIDDE-FENWAL, INC., Ashland, MA 01721 USA, Telephone: (508) 881-2000.

Kidde Fire Systems
400 Main Street
Ashland, MA 01721
Ph: 508.881.2000
Fax: 508.881.8920
kiddefiresystems.com